

Installing Device Control (Mac)

If you are accessing Remote Deposit Complete or Remote Deposit Scan for the first time, you must install EPS Device Control, an application used to manage your check scanner. Install Device Control before you can begin making deposits.

We recommend maximizing your browser window to best reflect the screenshots included in this document.

NOTE: Single sign-on users do not sign in via SmartPay Business; rather, they follow their financial institution's Remote Deposit Capture link to navigate directly to the SmartPay Business Dashboard.

11. Navigate to SmartPay Business and complete the **User Name**, **Password**, and **Company** fields as shown in the following image.

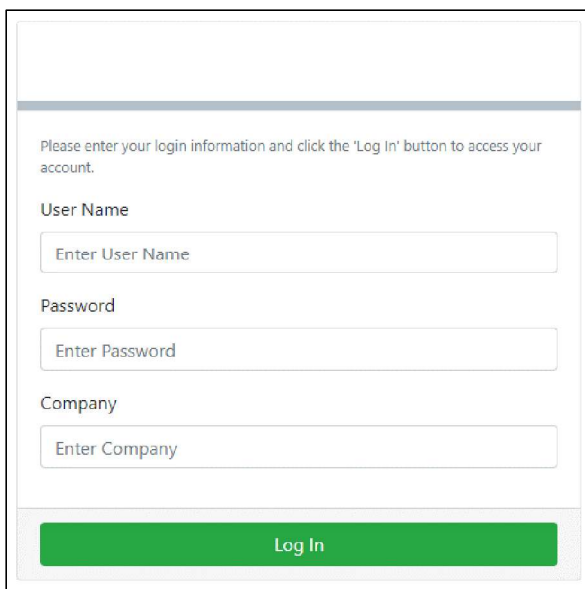
A screenshot of a web-based login form for SmartPay Business. The form is enclosed in a light gray border. At the top, there is a blue header bar. Below the header, a message reads: "Please enter your login information and click the 'Log In' button to access your account." The form contains three input fields: "User Name" with a placeholder "Enter User Name", "Password" with a placeholder "Enter Password", and "Company" with a placeholder "Enter Company". Below these fields is a green "Log In" button.

FIGURE 24 – LOGIN

12. Click **Log In**.

NOTE: If you are logging in to the application for the first time, you are prompted to update your password. A password must be between 8-15 characters, contain at least one uppercase letter, one lowercase letter, and one number.

13. Select **Transactions** from the navigation pane.

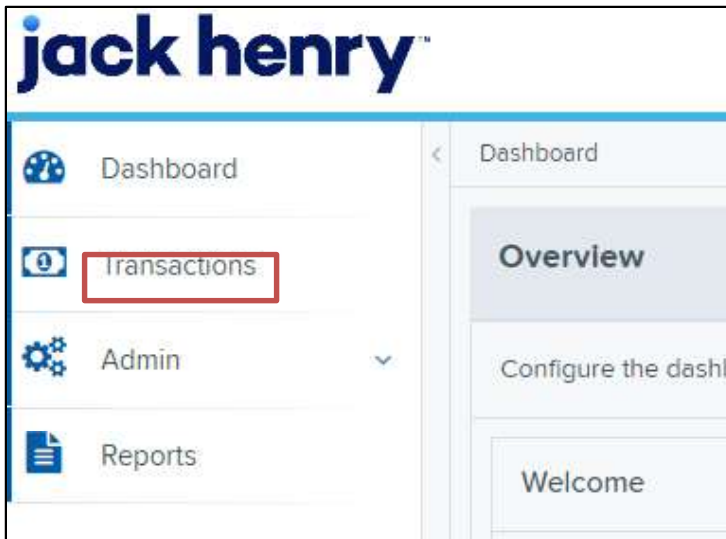


FIGURE 25 – TRANSACTIONS OPTION

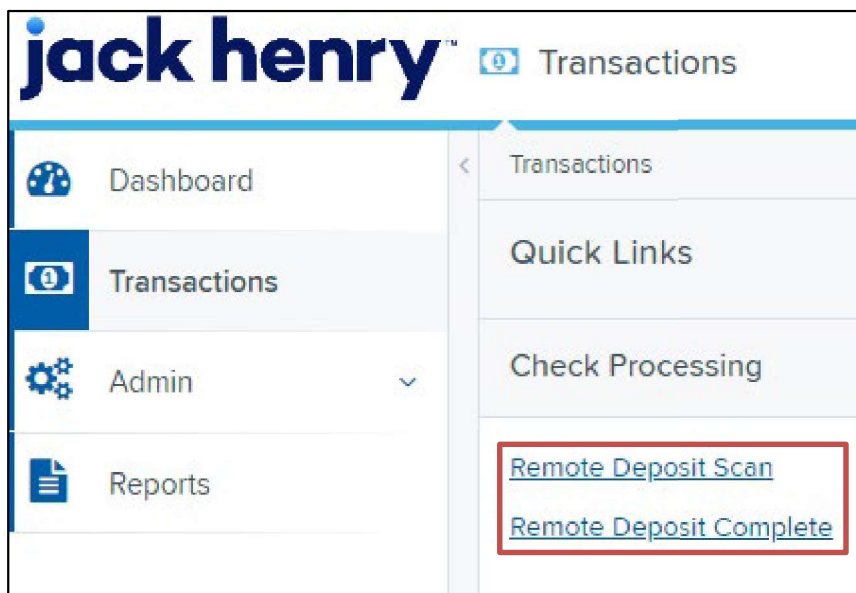


FIGURE 26 – CHECK PROCESSING

- 14.** Select either **Remote Deposit Scan** or **Remote Deposit Complete**. If you select Remote Deposit Complete, click **Create New Deposit**.



FIGURE 27 – CREATE NEW DEPOSIT

15. Optional: In the address bar, depending on your pop-up settings, you may see a *Pop-up blocked* notification. Click the notification and then select **Always allow pop-ups from** <https://qa.smartpay.profitstars.com>. Click **Done**.



FIGURE 28 – POP-UP BLOCKED

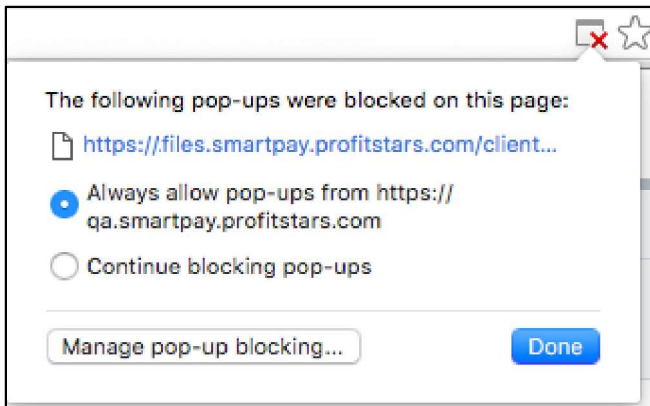


FIGURE 29 – ALWAYS ALLOW POP-UPS

16. The following warning message may appear. Click **Keep**.

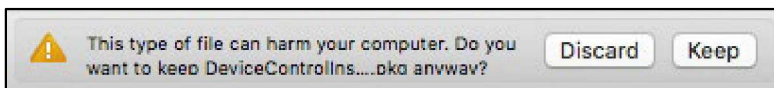


FIGURE 30 – WARNING MESSAGE

17. Click the **DeviceControllerInstaller....pkg** in your Chrome browser to begin the install.



FIGURE 31 – DEVICE CONTROL

NOTE: On Mac computers, you may connect your scanner at any time before, during, or after installation.

18. The *Installer* window appears. Select **Continue**.

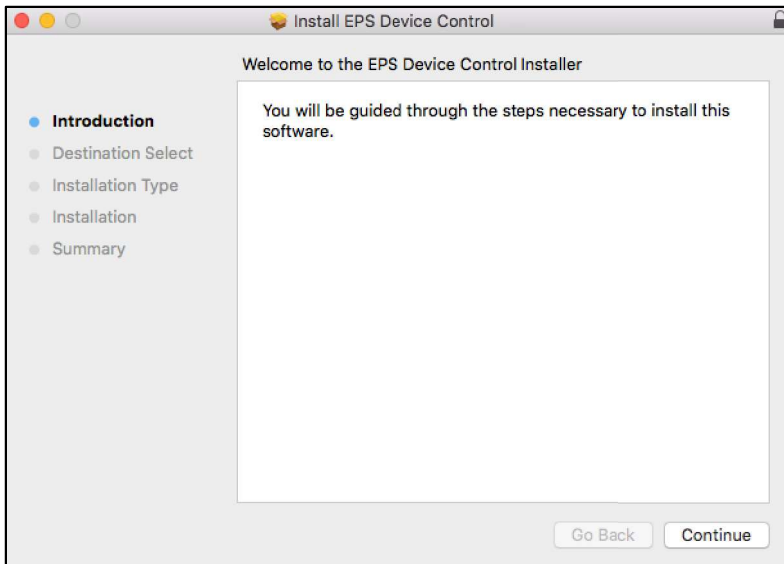


FIGURE 32 – INSTALL WIZARD

19. Click *Install*.

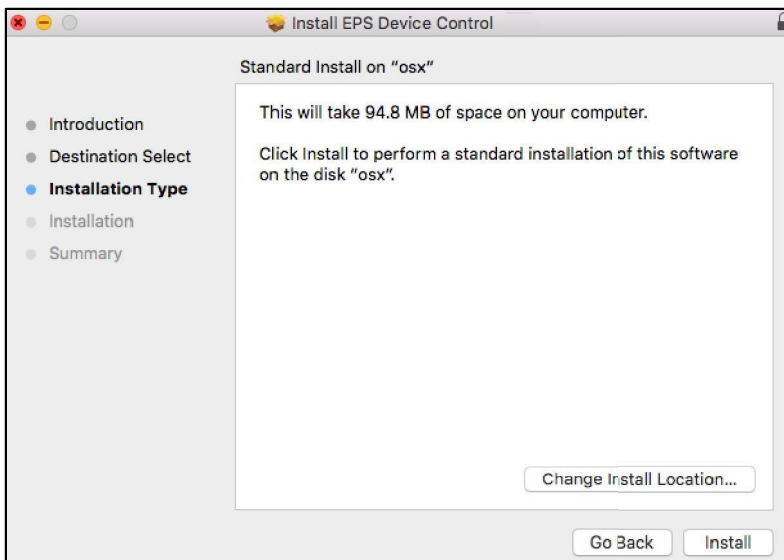


FIGURE 33 – INSTALLATION TYPE

20. You may receive a prompt to enter administrator credentials to perform the install. If it appears, enter the admin username and password, then click *Install Software*.

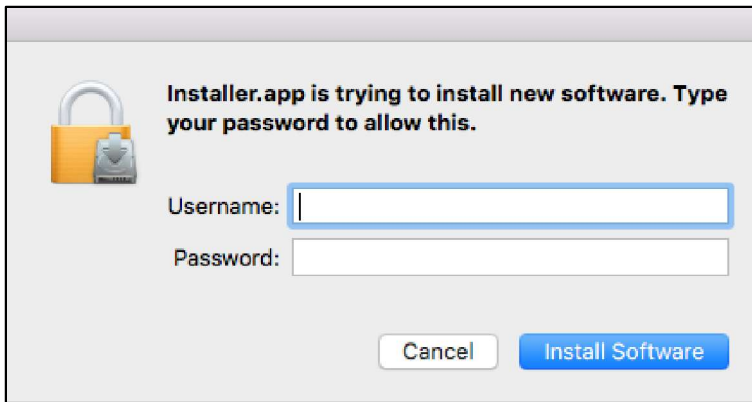


FIGURE 34 – ADMIN PROMPT

21. Click **Complete** in the *Complete Device Control Setup* window to install the Device Control certificate, modify its trust settings, and complete the setup.

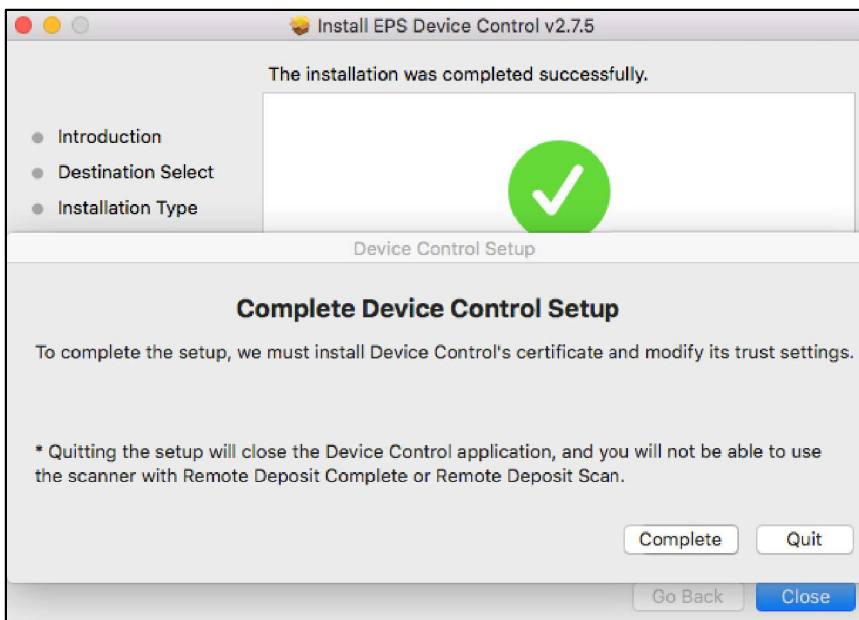


FIGURE 35 – COMPLETE DEVICE CONTROL SETUP

22. Enter your administrator credentials if prompted, and then select **Update Settings**.

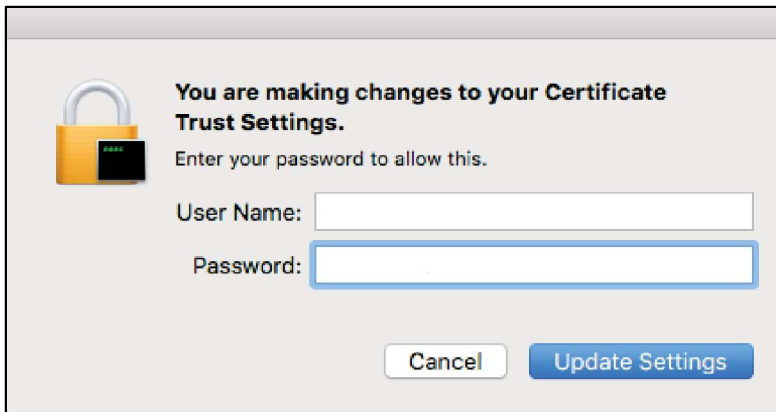


FIGURE 36 – ADMIN PROMPT

23. Click **Close** to finish the installation.

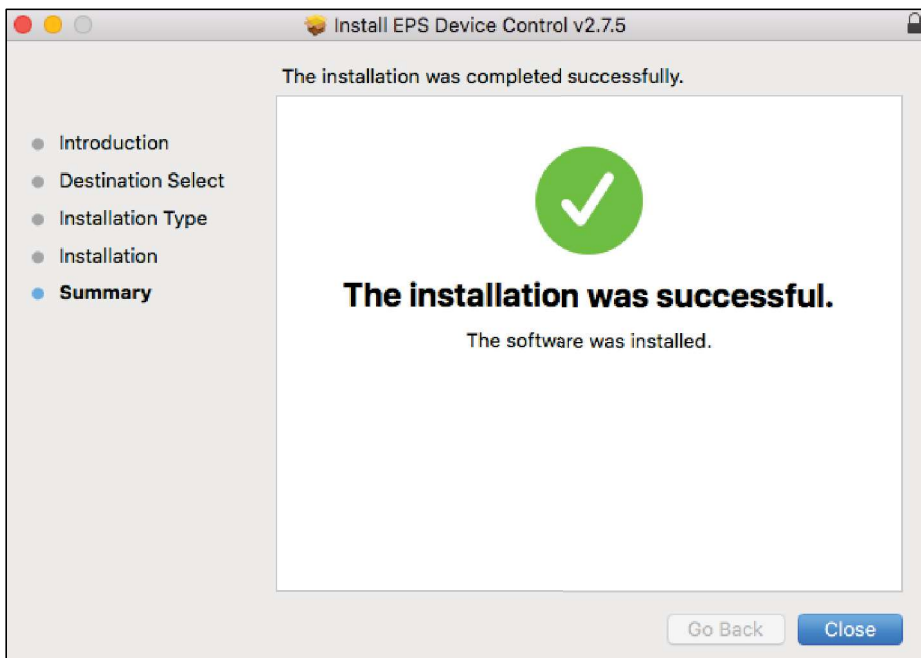


FIGURE 37 – INSTALLATION SUCCESSFUL

24. You may now begin scanning. For instructions on creating and managing deposits, refer to the **Remote Deposit Complete** or **Remote Deposit Scan Handbook**.